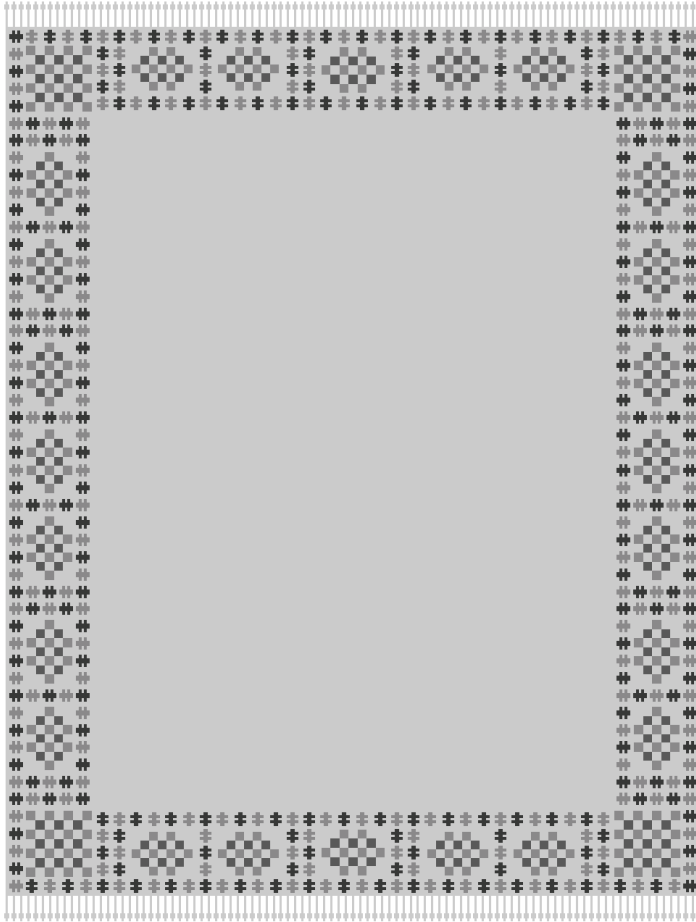


ZAK+FOX



KUBOA

CONTENT

75% tibetan wool
25% linen

CONSTRUCTION

handwoven

PILE HEIGHT

flat

EDGE FINISHING

hand-bound edges
with 4" wool tassels

MAX WIDTH

35'

MAX LENGTH

50'

HANDMADE IN

Nepal

CARE

spot clean

USE

low-medium traffic



TO NOTE

This is a handmade rug woven with natural wools. Minor variations in size, design and color are to be expected and are a hallmark of its craftsmanship. Handmade products may be subject to a shift in sizing, plus or minus 3%. Due to the composition of this rug, its fibers may shed lightly during the first few months of wear. Vacuum regularly without using a beater bar.

CAD scaled to 8' width x 10' length dimensions.



ZFKOARW-01

ZFKOARW-02