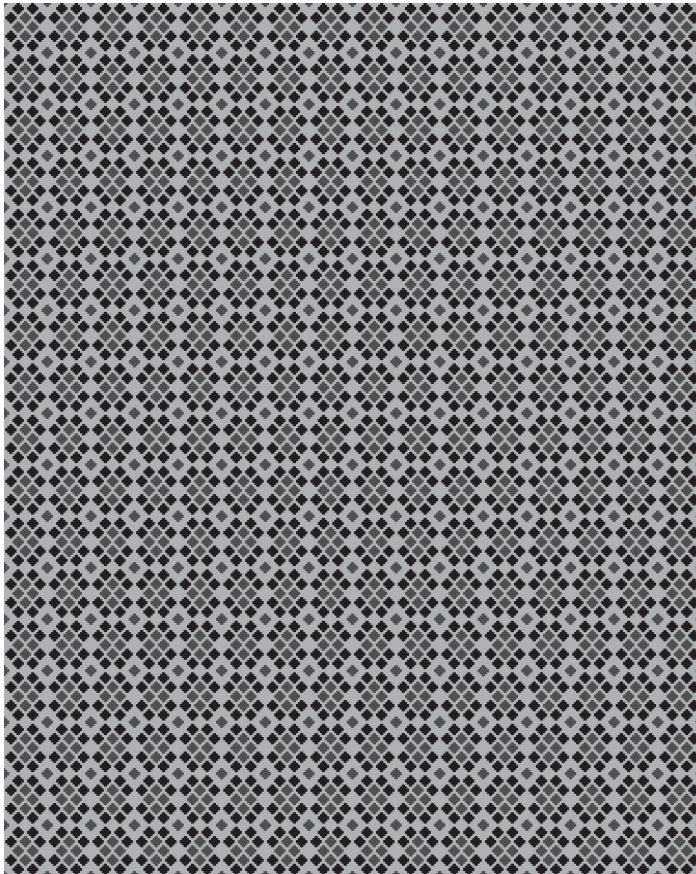


# ZAK+FOX

## FJALL

**CONTENT**

80% new zealand wool  
20% cotton

**CONSTRUCTION**

handwoven

**PILE HEIGHT**

flat

**EDGE FINISHING**

hand-bound edges with  
1/2" cotton fringe

**MAX WIDTH**

20'

**MAX LENGTH**

30'

**HANDMADE IN**

India

**CARE**

spot clean

**USE**

medium-high traffic

**TO NOTE**

This is a handmade rug woven with natural fibers. Placing this in direct sunlight may affect its color or cause fading to occur. Minor variations in size, design and color are to be expected and are a hallmark of its craftsmanship. Handmade products may be subject to a shift in sizing, plus or minus 3%.

CAD scaled to 8' width x 10' length dimensions.



ZFFJARW-01



ZFFJARW-02



ZFFJARW-03