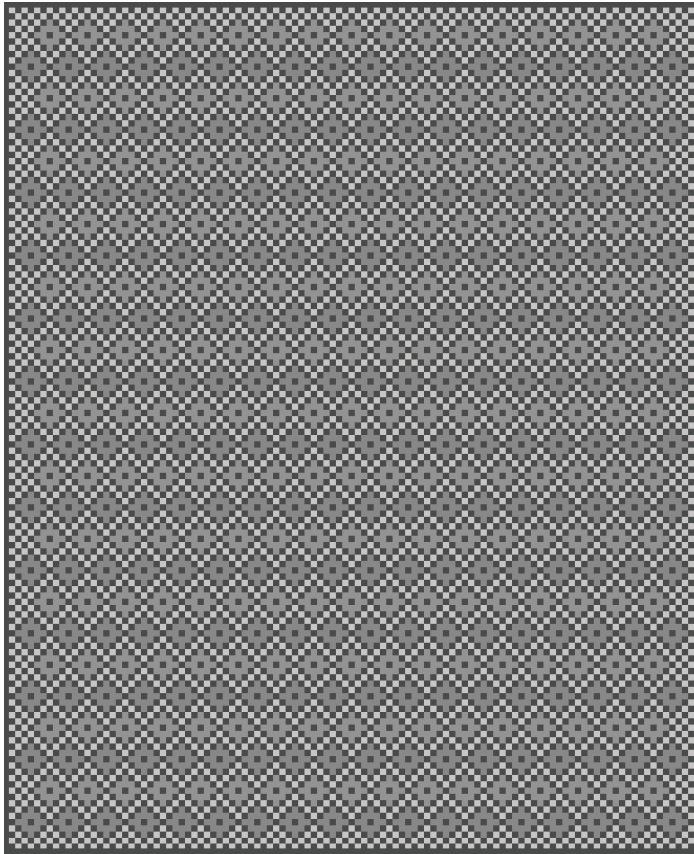


ZAK+FOX

KADAM



CONTENT
100% tibetian wool

CONSTRUCTION
handwoven

PILE HEIGHT
flat with 12mm
patterned pile

EDGE FINISHING
hand-bound edges

MAX WIDTH
50'

MAX LENGTH
50'

HANDMADE IN
Nepal

CARE
spot clean

USE
low-medium traffic



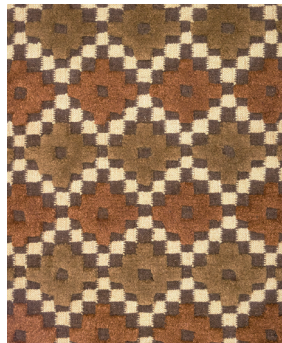
TO NOTE

This is a handmade rug. Minor variations in size, design and color are to be expected and are a hallmark of its craftsmanship. Handmade products may be subject to a shift in sizing, plus or minus 3%. Due to the composition of this rug, its fibers may shed lightly during the first few months of wear. Vacuum regularly without using a beater bar.

CAD scaled to 8' width x 10' length dimensions.



ZFKADRW-01



ZFKADRW-02



ZFKADRW-03