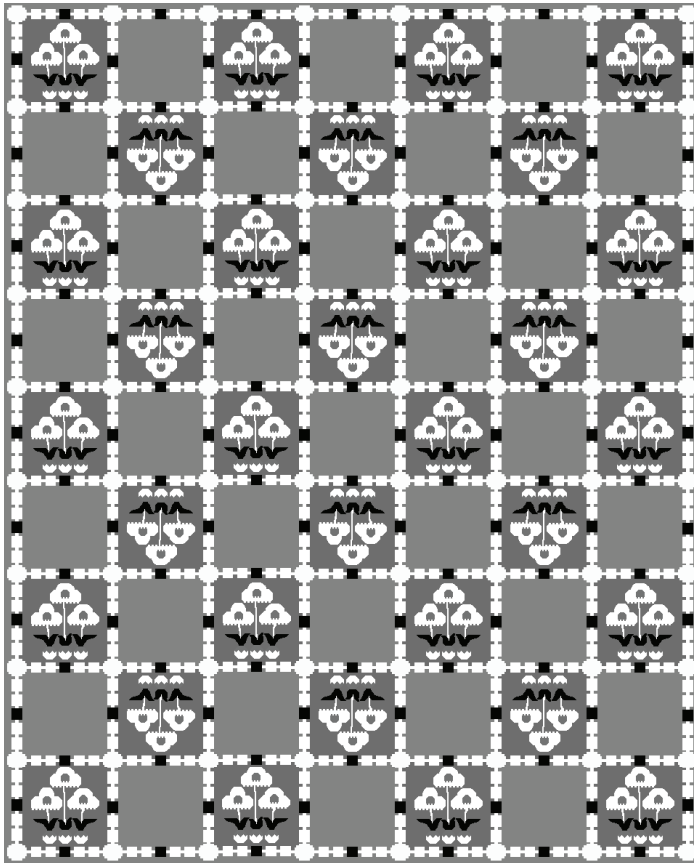


# ZAK+FOX

## SVEPPIR



### CONTENT

50% linen,  
30% new zealand wool,  
20% cotton

### CONSTRUCTION

handwoven

### PILE HEIGHT

flat

### EDGE FINISHING

hand-bound edges

### MAX WIDTH

20'

### MAX LENGTH

40'

### HANDMADE IN

India

### CARE

spot clean

### USE

low-medium traffic



### TO NOTE

This is a handmade rug woven with natural fibers. Placing this in direct sunlight may affect its color or cause fading to occur. Minor variations in size, design and color are to be expected and are a hallmark of its craftsmanship. Handmade products may be subject to a shift in sizing, plus or minus 3%.

CAD scaled to 8' width x 10' length dimensions.



ZFSEPRW-01